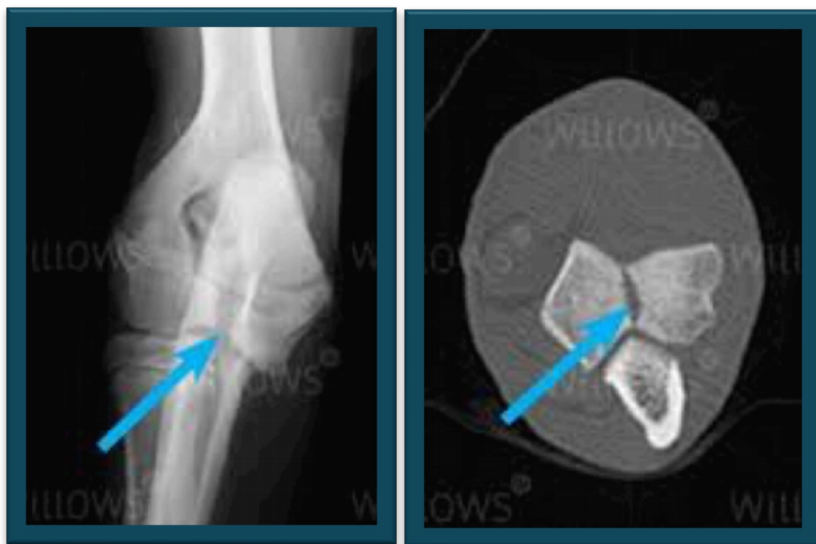




## POST OPERATIVE CARE

### Instructions for Humeral Incomplete Fissure (HIF)

Your dog has had surgery to repair a Humeral Intercondylar Fissure (HIF). This condition is common in Springer Spaniels. In puppies, the humeral condyle develops as two separate pieces of bone which should fuse together when they are approximated 20 weeks old. When this doesn't happen, a weak spot is left within the centre of the bone which can lead to a fissure fracture which appears at the joint surface and results in lameness. In worst case scenario's, this fissure can progress to a catastrophic fracture of the elbow joint.



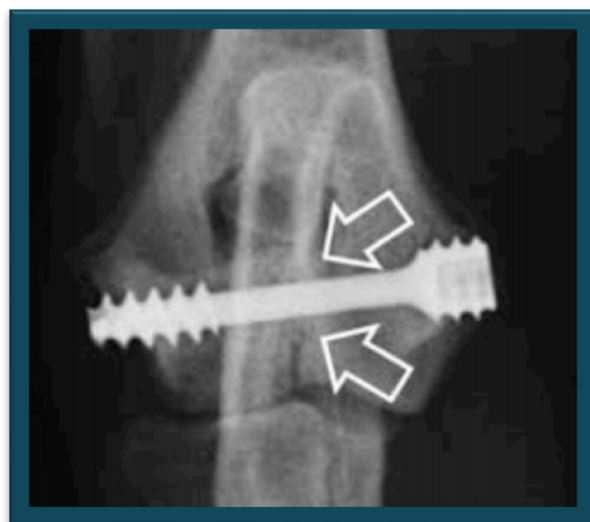
This problem is treated by placing a Transcondylar screw across the fissure to prevent fracture and to stabilise the fissure which resolves the lameness. In your dogs case, we have used a 4.5mm titanium screw, which is both strong and biocompatible.

#### Exercise Program Post Surgery:

**0-14 days post surgery:** Exercise on a lead in the garden for toilet purposes only. The rest of the time he/she should be confined to a cage. Please take every precaution to prevent your dog from licking the incisions which will increase the risk of post operative infection.

**2-8 weeks post surgery:** Start 10-15 minute lead walks and build up by 5 mins per walk per week. He/she no longer needs to be confined to a cage during this period, but it is important that running, jumping (particularly jumping downwards from a height) are avoided.

**10 weeks post surgery:** Return to normal exercise.



Contact your vet if any of the following occur:

1. Sudden deterioration in limping and or pain.
2. Wound interference/infection